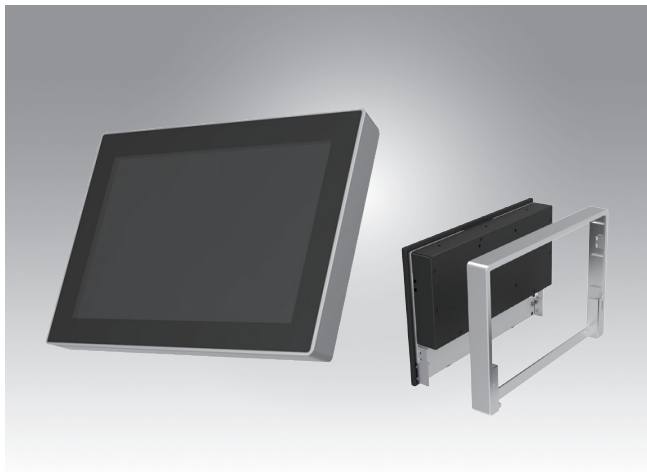


# UTC-510

## 10.1" Ubiquitous Touch Computer UTC-510D with Intel® Bay Trail E3825 / J1900



### Features

- Low Power & Fanless design
- Built-in Intel® Bay Trail E3825 / J1900 (UTC-510D)
- Providing Natural Viewing Experience with 16:10 10.1" Display
- Landscape & Portrait screen mode support by different applications
- VESA 75 mm standard mounting holes for varied mounting demands
- Detachable plastic frame design for panel mount applications



### Introduction

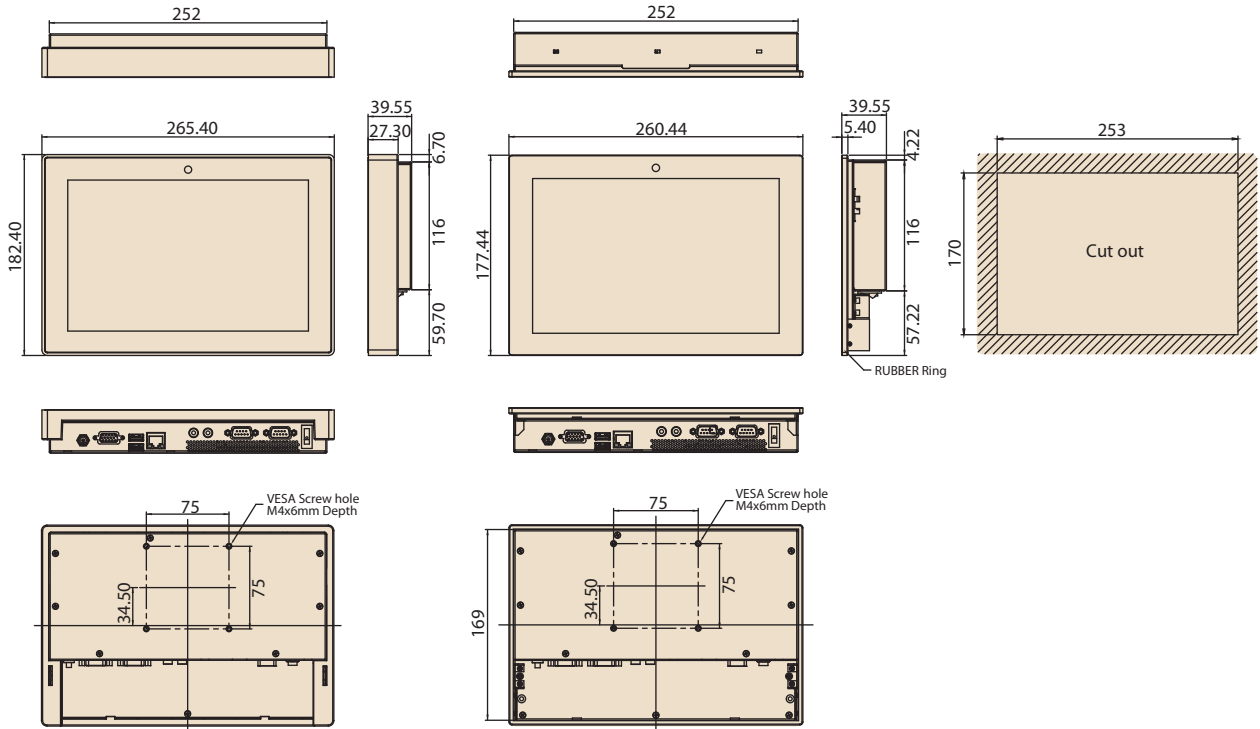
UTC-510 features an all-in-one computing system equipped with wide format, touch based LCD panel. It is easy to integrate key peripherals and display systems for diversified self-service and interactive signage deploy in different application areas. The systems deliver updated information with well-designed interactive interfaces, fully ensure relevant content and targeted promotions are delivered. UTC series touch panel computers are the best investments to enhance user satisfaction, further brand equity, and maximize business profits.

### Specifications

|                              |   |   |                                       |
|------------------------------|---|---|---------------------------------------|
| Processor System             | CPU   | Intel® Atom E3825 (UTC-510D)  | Intel® Celeron J1900 (UTC-510D)       |
|                              | Base Frequency  | 1.33 GHz (Dual-Core)  | 2 GHz (Quad-Core)                     |
|                              | Cache   | L2 Cache 1MB  | L2 Cache 2MB                          |
|                              | Memory  | 1 x SO-DIMM DDR3L 1066 MHz up to 8 GB                                     | 1 x SO-DIMM DDR3L 1333 MHz up to 8 GB |
|                              | HDD   | 1 x 2.5 internal SATA HDD bay   |                                       |
|                              | Network (LAN)   | 1 x Gigabit Ethernet ports (Supports Wake on LAN)                         |                                       |
|                              | I/O ports   | 2 x RS-232 COM (COM1 RS-422/485 supported)*                               |                                       |
|                              |   | 1 x USB 2.0 / 1 x USB 3.0 / 2 x USB 2.0 (optional)*                       |                                       |
|                              | Stereo Speaker  | 1 x Gigabit Ethernet (RJ-45)<br>1 x VGA<br>Audio Line-out x 1, Mic-in x 1 |                                       |
|                              | Bus expansion   | 2 W x 1<br>1 Half size MiniPCIe<br>1 Half size mSATA                      |                                       |
|                              | Mounting  | VESA 75 x 75 mm   |                                       |
| Dimensions (W x H x D)       | 265.40 x 182.40 x 39.55 mm  |   |                                       |
| Weight                       | 1.80 kg (3.97 lbs)  |   |                                       |
| OS Support                   | Windows Embedded 7, Windows Embedded 8, Window 10 IoT Enterprise, Linux Ubuntu 14.04, Android 4.4.2 |   |                                       |
| Front Panel Protection       | IP 65 Compliant   |   |                                       |
| Environmental Specifications | Operating Temperature   | 0 ~ 40° C (32 ~ 104° F)   | 0 ~ 35° C (32 ~ 95° F)                |
|                              | Relative Humidity   | 10 ~ 95% @ 40° C non-condensing   |                                       |
|                              | Vibration   | 1Grms   |                                       |
|                              | Shock   | 5G peak acceleration (11 msec. duration)                                  |                                       |
|                              | Certification   | CE, FCC, CB, UL, CCC, BSMI  |                                       |
| Power Supply                 | Input Rating  | 12 V/3 A (36W ITE Adapter)  |                                       |
|                              | Power consumption   | Typical 10W<br>Max. 20W   |                                       |
| LCD Display                  | Size/Type   | 10.1" TFT LCD with LED backlight  |                                       |
|                              | Max.Resolution  | 1280 x 800  |                                       |
|                              | Max. Color  | 16.7M   |                                       |
|                              | Pixel Pitch (um)  | 169.5 x 169.5   |                                       |
|                              | Brightness (cd/m <sup>2</sup> )   | 350   |                                       |
|                              | View Angle  | 170 / 170   |                                       |
| Touch Screen Option (PE/GE)  | Camera  | 5 Mega Pixel (Optional)   |                                       |
|                              | Type  | Projected Capacitive. Glass Panel   |                                       |
|                              | Light Transmission  | 80% ± 5% / 90%  |                                       |
| Controller                   | USB Interface / -   |   |                                       |

**Dimensions**

Unit: mm



**Ordering Information**

| Part No.        | Description  |
|-----------------|--|
| UTC-510DP-ATB0E | 10.1" Intel Atom E3825 Based fanless UTC with PCT.T/S 2GB RAM    |
| UTC-510DG-ATB0E | 10.1" Intel Atom E3825 Based fanless UTC with Glass 2GB RAM      |
| UTC-510DP-ATB1E | 10.1" Intel Celeron J1900 Based fanless UTC with PCT.T/S 2GB RAM |
| 1700001524      | Power Cord 3P UL 10A 125V 180cm                                  |
| 170203180A      | Power Cord 3P UK 2.5A/3A 250V 1.83M                              |
| 170203183C      | POWER Cord 3P Europe (WS-010+WS-083)183cm                        |
| 1700021374-01   | Power Cord 3P CCC 2.5A 250V 250cm (IEC60320-C5)                  |
| 1960073820N001  | IO Cover UTC-510   |
| 1931031500      | Screws for IO Cover UTC-510(*2)                                  |

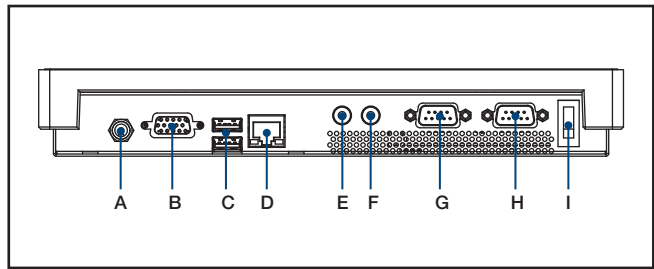
**Peripherals for UTC-510 series**

| Part No.      | Description                                      |
|---------------|--|
| UTC-510P-R01E | RFID Reader For UTC-510 (USB connection)         |
| UTC-510P-B01E | 1D Barcode Scanner for UTC-510 (USB connection)  |
| UTC-510P-B02E | 2D Barcode Scanner for UTC-510 (USB connection)  |
| UTC-510P-M01E | Magnet Strip Reader For UTC-510 (USB connection) |

**Installation Accessory**

| Part No.         | Description                        |
|------------------|------------------------------------|
| UTC-WALL-MOUNT1E | Wall Mount kit for UTC-520/515/510 |
| UTC-WALL-MOUNT4E | UTC-510 VESA mount (75 x 75)       |
| UTC-S03-STANDE   | UTC 75*75 mm Desktop Stand         |
| UTC-510-STANDOE  | UTC-510 desktop stand              |
| 1960074091N000   | UTC-510 Panel Mount Clamper (*4)   |
| 1930005598       | UTC-510 Panel Mount Screw (*4)     |

**Fully- Integrated I/O**



- A. DC Power jack
- B. VGA
- C. USB 3.0 x 1, USB 2.0 x 1
- D. LAN Ports
- E. MIC-in
- F. Line-out
- G. COM 2
- H. COM 1
- I. Power switch